

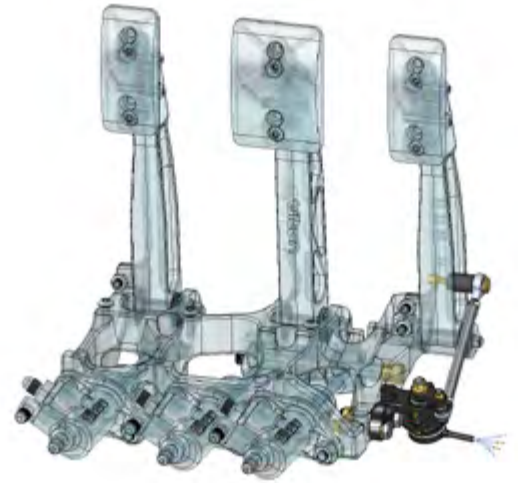
## Throttle Drive-By-Wire System, Underfoot Mount Pedals

### INTRODUCTION

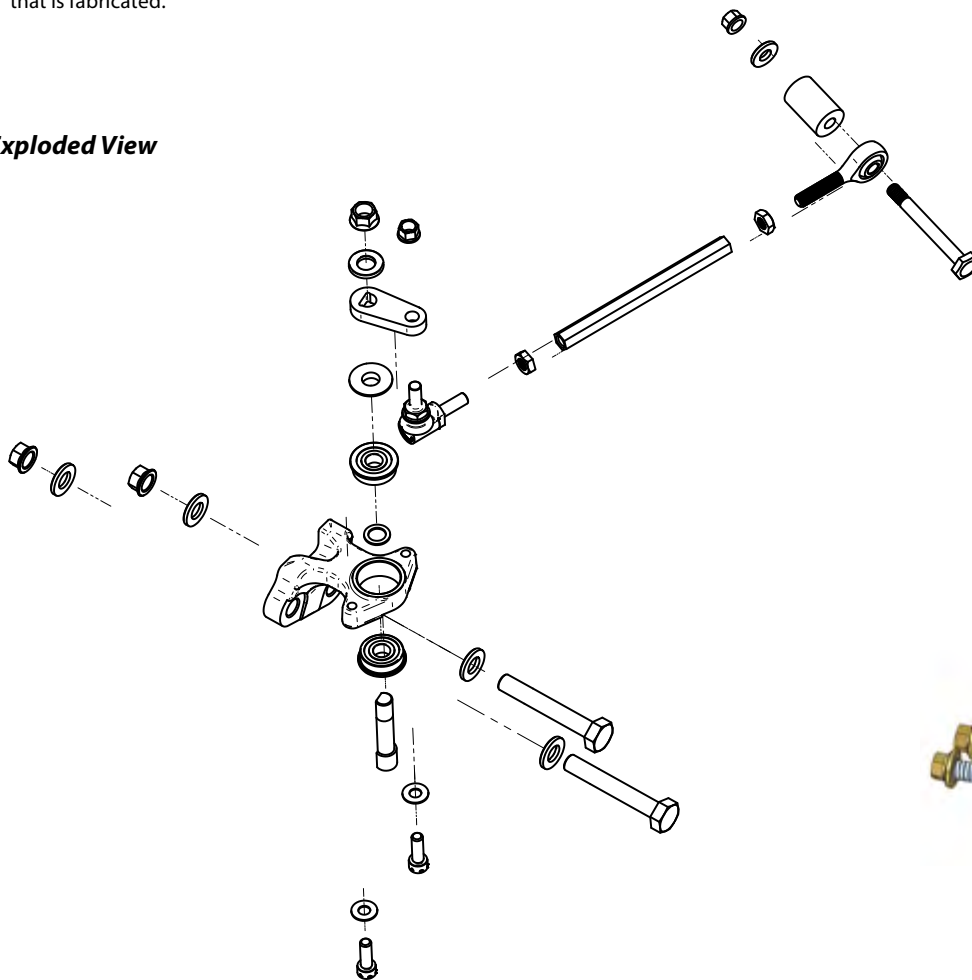
Tilton's 72-794 Throttle Drive by Wire System for use with the 600 series Underfoot Pedal Assemblies is a bolt on kit that allows for throttle position to be monitored with a sensor and relayed electronically for Drive by Wire (DBW) applications.

### NOTES

- Designed for use with Penny & Giles TPS280DP family of sensors (Sensor is not included).
- The kit includes a bearing carrier block that bolts to the existing holes on the pedal assembly frame. A link arm and "D" shaped shaft is provided for sensor connection. The adjustable rod end pair connects this link arm to the throttle pedal.
- The Throttle Drive by Wire System comes pre-assembled from the factory.
- The throttle pedal has two bolt holes for connecting the rod end pair allowing for different ratios and therefore sensor shaft angle.
- Progressive sensor travel is possible with specific initial positioning of the link arm.
- Adjust length of tie rod link to avoid any binding of ball joint through throttle pedal travel. Make sure to keep adequate thread engagement between the hex link and the ball joint/rod end. Once adjusted, tighten the jam nuts against the hex link to prevent loosening.
- End user must assure clearance with this Throttle Drive by Wire System and any false floor/heal rest that is fabricated.



### Exploded View



72-794 with sensor  
(Sensor not included)